

# Development Finance, backed by bold thinking - from the ground up

## Key details:

Total borrowing:

**£1,375,000**

Net Loan + rolled Up Interest

GDV:

**£2.72  
million**

Original term:

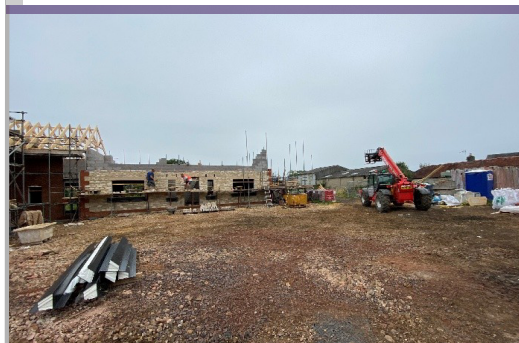
**18 months**

Loan to cost:

**58%**

## 3x Units

- 1 x 2-bed bungalow, 1 x 4-bed house, 1 x 5-bed house
- Term was increased to 24 months due to market delays, with an exit bridge prepared but not utilised
- Ground-up development
- Developer already owned the land, Saffron For Intermediaries financed the build



Embracing  
different



**Saffron**  
For Intermediaries